



The Watch Place ONLINE

A Division of Harrington Enterprises, Inc.

Marking the passage of time with style.

“Replica” Omega Seamaster



The Rolex Submariner may be the most “copied” watch out there, but the Omega Seamaster is certainly becoming a close second. This watch came to me through a client and it’s an interesting piece. It even came with a decent box. As you can see, the face is marked “Swiss Made” though it most certainly is not. This particular watch has what looks like a Miyota (*or copy*) movement. The movement is well-made and very nicely seated in the case. On first external examination, this watch had what



appeared to be a “functioning” helium valve. On the vast majority of replicas, the crown at the 10:00 position is fixed and does nothing. On this watch it unscrews. The case-back looks very much like an authentic Omega, but the clasp gave it away as a replica. Though it functions like the real thing, the engraving on the outside is not correct. The “procedure” to close this clasp involves making sure that the wet-suit extension is properly folded and is illustrated on the next page.

This watch didn’t “pass” external examination, but I did continue testing the watch and it functioned quite well. I ran it on our tester for over 72 hours and it only gained 18 seconds (*that’s better than some “real” Swiss watches*). I didn’t put the watch to a severe test, but it did pass a 30 meter water resistance test.

A lot of these replicas are starting to scare me, it’s becoming increasingly difficult to spot them on external examination. This means that the likely hood of being cheated is growing. It’s not a replica if it is represented as the real thing - it’s out and out counterfeit. I have heard lots of rumors of “fakes” entering into the Omega market and, with a few improvements, a watch like this would easily pass an external



examination. It serves to reinforce that you should only buy from a reputable dealer.

David Harrington

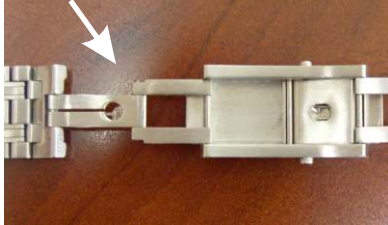


Clasp Images →



Incorrect Engraving

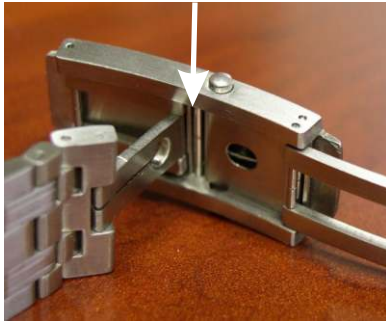
Wet-Suit Extension **Open Clasp**



Fold Extension First



Make Sure It Fits Under Bar



Fold Flat



Fold Main Clasp On Top Of Folded Extension



Fold Flat

