



# The Watch Place ONLINE

A Division of Harrington Enterprises, Inc.

Marking the passage of time with style.



## “Replica” Omega Seamaster 007 James Bond Watch

The Rolex Submariner may be the most “copied” watch out there, but the Omega Seamaster (*especially the 007 version*) is certainly becoming a close second. This example came to me through a local pawn shop and it’s

an interesting piece. It even came with a decent box and “warranty” card. As you can see, the face has the “007” imprint in the background and it is marked “Swiss Made” though it most certainly is not. This particular watch



has what looks like a Miyota (*or copy*) movement. When I first saw this watch, I thought it might be authentic.

The box was an “old” style, but looked correct. Omega is now providing a wonderful set of packaging that includes a large “book” and multiple section box for the paperwork, warranty, and actual watch box. On external examination, this watch had what appeared to be a “functioning” helium valve. On the vast majority of replicas, the crown at the 10:00 position is fixed and does nothing. On this watch it unscrews. The case-back looks very much like an authentic Omega, but the clasp gave it away as a replica. Though it functions like the real

thing, the engraving on the outside is not correct. The “procedure” to close this clasp involves making sure that the wet-suit extension is properly folded and is illustrated on the next page.



OK, so this watch didn’t pass external examination, but I did continue testing the watch and surprised at how well it functioned. I ran it on our tester for over 48 hours and it only gained 14 seconds.



I have some pretty pricey Swiss watches that aren’t that accurate. I didn’t push it too hard, but it did pass a 30 meter water resistance test. On the wrist, it ran within 6 seconds per day?!?!? Most Invictas with a Miyota movement are “faster” than this.

Overall, this watch scares me. I have heard lots of rumors of “fakes” entering into the legitimate Omega market and, with a few improvements, a watch like this would easily pass an external examination. It serves to reinforce that you should only buy from a reputable dealer.

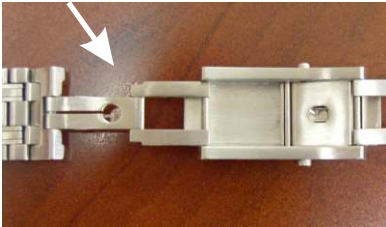
David Harrington

Clasp Images →



**Incorrect Engraving**

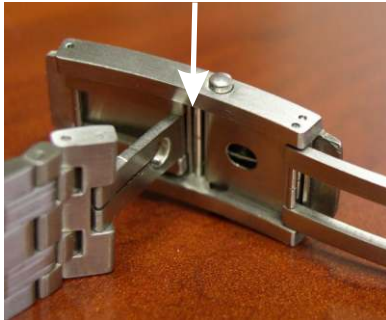
**Wet-Suit Extension**      **Open Clasp**



**Fold Extension First**



**Make Sure It Fits Under Bar**



**Fold Flat**



**Fold Main Clasp On Top Of Folded Extension**



**Fold Flat**

