



The Watch Place ONLINE

A Division of Harrington Enterprises, Inc.

Marking the passage of time with style.



“Replica” Rolex Submariner With Swiss Movement

The Rolex Submariner is certainly one of the most copied watches in history, both in “homage”(same design, different brand) and in replicating or counterfeiting. There are literally hundreds of people selling replicas online claiming that they are Swiss-made. I have

examined more of these replicas than I can count and with VERY FEW EXCEPTIONS they are made in Asia, usually with an inexpensive Chinese movement. Even the vast majority of those claiming to have Japanese movements actually contain low grade Chinese engines. So are *any* of the “Swiss” replicas actually powered by a Swiss movement? Yes.



This example came from Michael Beach in Thailand, and though the other components of the watch appear to be a Asian origin, the movement is a Swiss ETA 2836.

This is probably a good point to remind you that I do not advocate purchasing



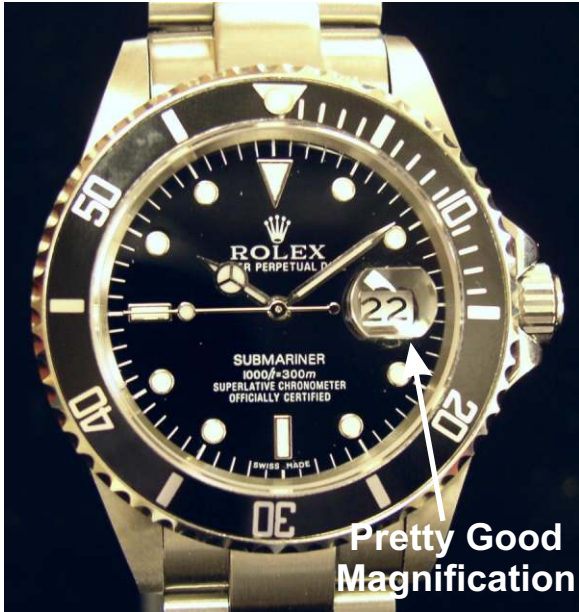
replica watches. There is no replica that is even close to the original in quality, workmanship or long term value. I have examined replicas in other articles and emails and most of those watches were of low quality, especially in their movements. I am examining this particular watch because, in fairness, it is what it claims and that’s a Swiss movement replica. That

following pictures illustrate the components, which are of acceptable quality.

This watch is NOT comparable in quality to a real Rolex Submariner, no replica is. It is a decent Swiss movement watch.

David Harrington

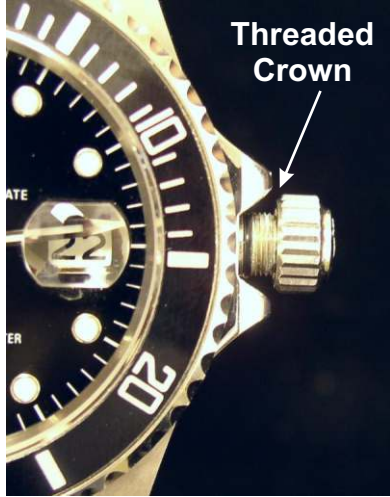
More Images →



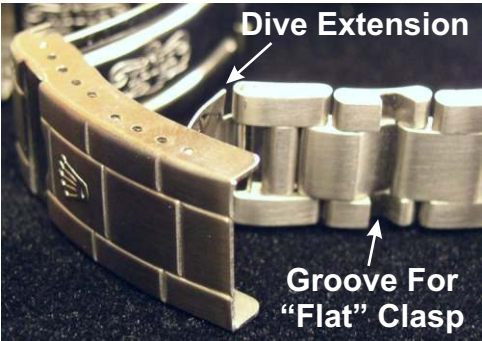
Pretty Good Magnification



Large, Crown With Rolex Logo

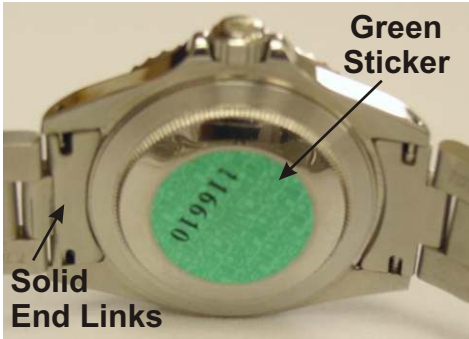


Threaded Crown



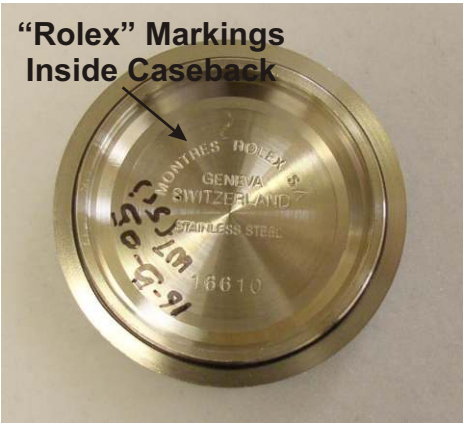
Dive Extension

Groove For "Flat" Clasp



Green Sticker

Solid End Links



"Rolex" Markings Inside Caseback

